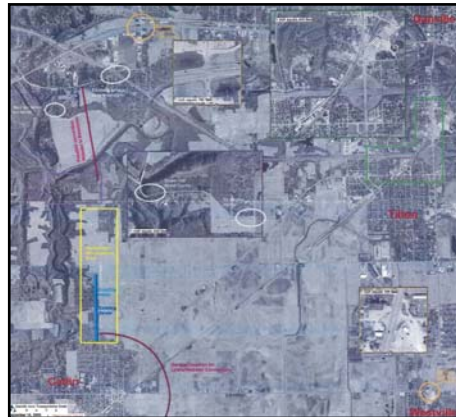


ALTERNATIVE CORRIDOR FEASIBILITY STUDY CATLIN/DANVILLE, ILLINOIS



This study used an Origin-Destination Study to evaluate the traffic patterns and needs of the southwest portion of Vermilion County and make recommendations regarding future improvements.

One major issue involved the high volume rail line that cut diagonally through the Catlin area causing disruption to the flow of traffic in and out of the City of Danville. The collected data was used to determine which areas of Danville the public was trying to reach. Desire Line Maps were then developed to show the most widely traveled routes in order to determine where it was most feasible to improve existing routes, as well as provide Railroad Bypass routes, overpasses and/or provide new routes in and out of Danville.

This project also examined the feasibility of improving local street connectivity, which improvements would enhance land use development, prioritization of these improvements, infrastructure expansion and cost analysis for the improvements.

Services Provided:

- Feasibility Planning Study
- Origin – Destination Study
- Data Collection
- Cost Estimating
- Public Meeting and Focus Group Meetings
- Report preparation

This project reflects Firm
and Staff experience.