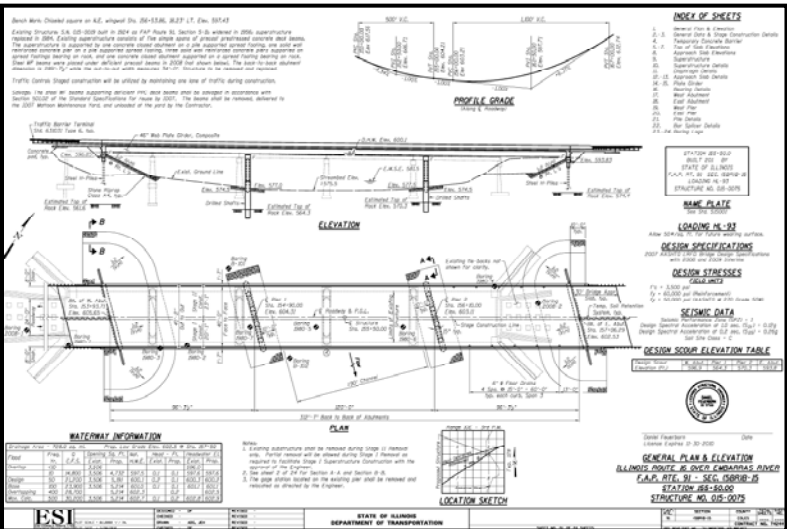


**IL 16 OVER EMBARRAS RIVER
COLES COUNTY, ILLINOIS**



EXISTING STRUCTURE



PROPOSED BRIDGE PLAN

Planning services provided for replacement of the structure carrying IL 16 over the Embarras River in Coles County. The proposed structure is a continuous 312'-7", three-span, composite, 46" Web Plate Girder bridge skewed 15°.

Roadway work consisted of a new vertical alignment, raising the road approximately 7', to meet IDOT hydraulic vertical clearance policy and improve roadway geometrics.

Services Provided:

- Final Structure and Roadway Plans
- Specifications / Special Provisions

This project reflects Firm and Staff experience.