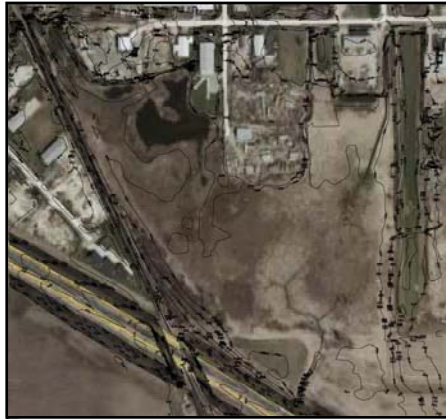
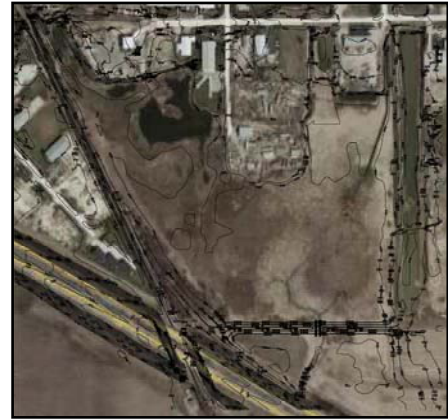


**STORMWATER MANAGEMENT STUDY  
GILBERTS, ILLINOIS**



Existing Condition



Proposed Condition

During the 1980's and early 1990's, Phoenix & Associates provided environmental and construction services to the Village of Gilberts and businesses. The U.S. Corps of Engineers had issued violations against these parties for filling a wetland adjacent to the East Industrial Park. Phoenix retained engineers to prepare hydrological and hydraulic studies of the watershed and waterway to Tyler Creek, which consisted of an area of 1,033 acres. These studies were used to convince the COE of the improvements that needed to be made to return the wetland to its previous condition. The COE and Village also agreed to allow Phoenix to over excavate the wetland and allow this storage to be sold by Phoenix as a revenue source to reimburse them for providing these services.

When the Kane County Stormwater Ordinance was adopted in 2002, the previous agreement had not been recognized. The County and Village agreed that this agreement could be re-established if Phoenix could confirm that the detention facility met the current ordinance. Phoenix retained ESI Consultants to prepare the hydrological model and recommend the improvements to the detention facility required to meet this current ordinance. In addition, ESI prepared an exhibit specifying which properties within the watershed could benefit from the establishment of this detention facility. The properties were then prioritized into three categories based on the ability to economically use these credits.

**Services Provided:**

- Hydrological Model (HEC-1)
- Hydraulics Model (HEC-2)

This project reflects Firm  
and Staff experience.