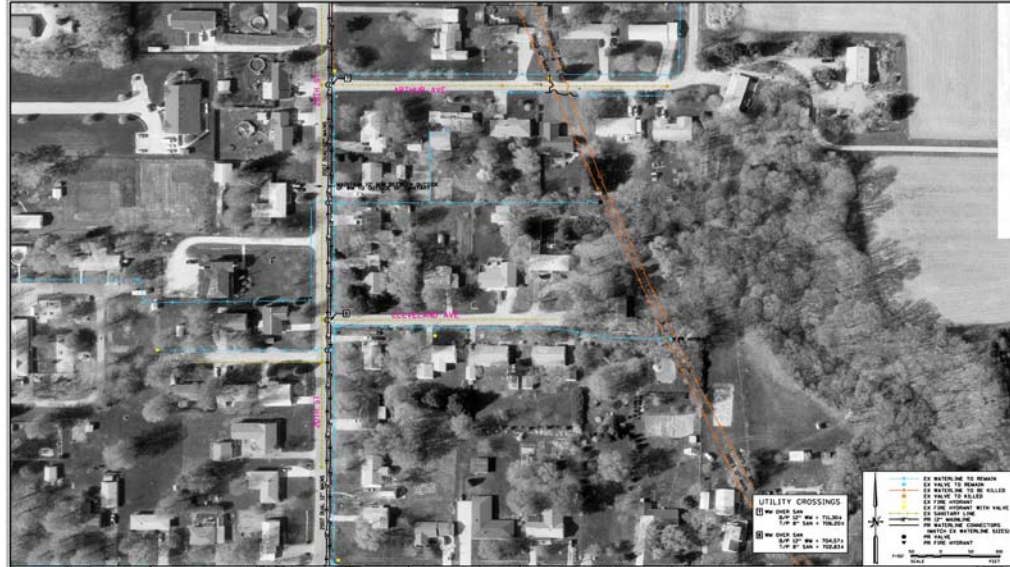


20<sup>th</sup> STREET DUAL 12" WATERLINE, CHARLESTON, ILLINOIS



This project developed the basic plan for the removal of a 100 year-plus dual 12" waterlines feeding the entire City of Charleston and replacing them with dual 12" lines down 20<sup>th</sup> Street in Charleston. The existing lines that fed the entire city were very old and were under existing homes and businesses. The lines directly fed the entire city from the new water plant on the south east side of town. ESI Consultants, Ltd. developed an overall plan for replacing these existing lines with 1.15 miles (6,072 feet) of new dual 12" waterlines down 20<sup>th</sup> Street and connected them with the existing distribution system near Illinois Route 16. The plan developed the methodology to construct the new lines and maintain water service to the community with minimal disruption. The ultimate goal was to secure the IEPA permit for the project and aid in the procurement of grant funding to help construct the project.

**Client:** City of Charleston  
**Services Provided:**

- Permit application development

This project reflects Firm  
and Staff experience.